



Cathy Miller
0977824737
cathy.miller@lilayi.com

Contact Property Partners
Zambia

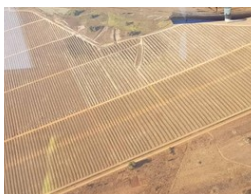
260 977824737

403A Lilayi Road,
Lilayi,
Lusaka,
Zambia

SOLD



Web Ref CL55



\$3,220,000

 0  0

406 ha Commercial Farm For Sale in Mkushi

This is a 406 hectare commercial farm comprising:

220 hectares of centre pivot irrigated land.
64.31 hectares of dry arable land
80.37 hectares of bush land

Developed with the main farm house, farm managers house, and workers compound, cattle pens, sheep pens, water reservoirs, boreholes and fittings with 14.5 kilometres fencing.

KEY CONSIDERATIONS: Good location in a well established Mkushi Farming Block. Serviced with three phase electricity. Water for irrigation obtained from two dams, property also has shares in Lusemfwu Dam Project. Land with waterways and contoured, rocks removed and hills leveled.

Farm has livestock handling facilities and equipment.

70ha of Mangoes & Avocado, 36ha avo land prepped Pump stations, microirrigation, ridges, prep.

Zoning Agricultural

Interior
Power 3 Phase Yes

Sizes
Floor Size 406m²
Land Size 406Ha

