

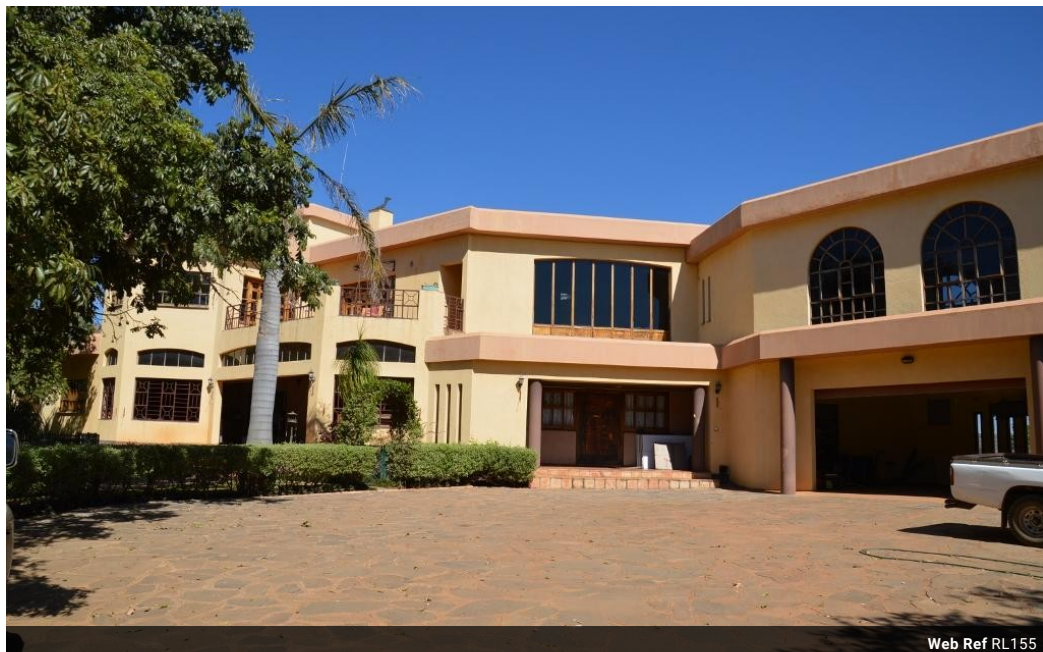


**Cathy Miller**  
0977824737  
cathy.miller@lilayi.com

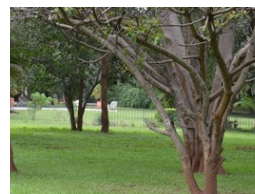
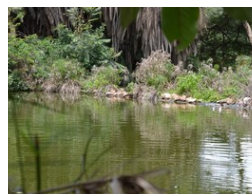
Contact Property Partners  
Zambia

260 977824737

403A Lilayi Road,  
Lilayi,  
Lusaka,  
Zambia



Web Ref RL155



\$3,500,000

 20  14.5  12

Ezweni Estate, Leopards Hill Road. 13 houses on 30 acres of beautiful land for sale

14 acres of land within a gated complex. 6 houses which are fully rented and land for further development.

Leopards Hill is on the outskirts of the city in a South East direction. The area offers the ultimate in outdoor family living and is accessible from the Leopards Hill road (which runs between Woodlands and Kabulonga and through Crossroads) or the recently tarred back roads towards the South (Kafue road) or roads towards the East (Airport road). Trade names and places of interest within a 5km radius include, the Lusaka Gun Club, the Lusaka Motocross Club, Monkey Pools, Marys Book shop, Lazy J Stables, Trotover Stable yard, Leopards Hill Polocrosse and Cricket Club, The Village shopping outlets, Leopards Hill Light Industrial Park, Oxygen, American International School, Cross Roads Shopping Centre, MFES Industrial Park,...

**Pets Allowed** Yes

**Interior**

Bedrooms	20
Bathrooms	14.5
Kitchens	6
Recep. Rooms	12
Studies	2
Furnished	No

**Exterior**

Garages	12
Carports / Parkings	7
Security	Yes
Dom. Accom.	13
Pool	Yes
Views	No

**Sizes**

Land Size	56,000m <sup>2</sup>
-----------	----------------------

**Extras**

All houses occupied. Large grounds with further development opportunities. Pond on estate

